

# TLA Forestry Education Fund: What Your Money Achieves

The TLA Forestry Education Fund only exists because each year TLA members and supporters graciously donate items to the live and silent auctions and then bring their cheque books with them to the TLA Convention for auction night. In the hurly-burly of the auction, it's easy to forget what we're supporting. So here's a reminder! All the projects highlighted here were supported by the TLA Forestry Education Fund in 2015. Thank you for your continued support of our investment in the future of forestry!



Photo: Courtesy of Festival of Forestry



Photo: Courtesy of Blue Lake Forest Education Society

Above: Founded in 1967 by Bill Moore, the Festival of Forestry takes 15-20 teachers to a BC forestry community each year and shows them on-the-ground forestry. The tours provide teachers an interactive learning experience and gives them ways to integrate what they learn about forestry into their teaching.

**Annual spend: \$5,000**

Left: Blue Lake Forest Education Society in Cranbrook has strong ties with local schools and is a valuable resource for teachers in achieving science and forest curriculum requirements. This summer, kids in their camp programs used increment bores, compasses and measurement reels funded by the TLA:

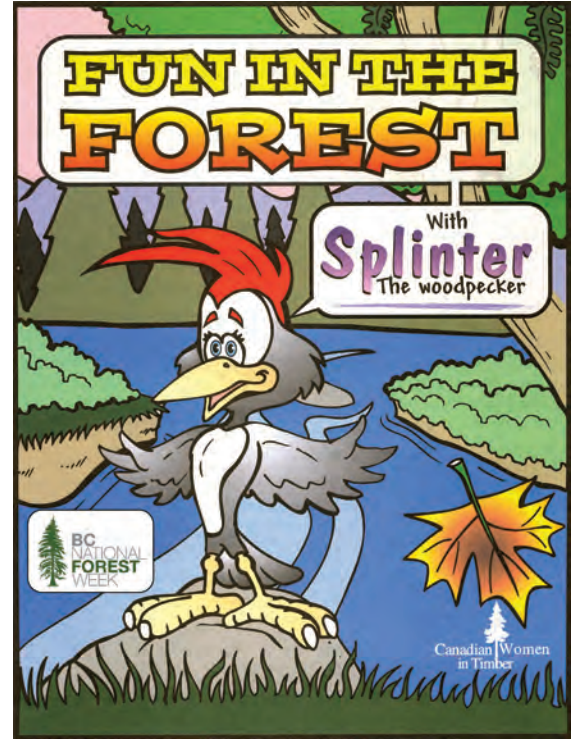
**Total spend: \$2,750**

**Find out how to apply for funding:**

**[www.tla.ca/education](http://www.tla.ca/education)**



Photo: Brian Dennehy Photography



Above: Since 2013, the BC National Forest Week Coalition has been leading National Forest Week activities in BC by buying and distributing promotional items, such as the activity book above, and buying advertising province-wide.  
**Annual Spend: \$5,000**

Above: Scholarships are given annually to students planning to join the forest industry. Last year, 19 were awarded to students at UBC, VIU and BCIT.

**Approx annual spend: \$30,000**



Photo: Alf Bauer Photography

Port Hardy has just launched its own high school forestry education program—the third on the Island! It took a lot of hard work from teachers, the community and local companies to get it off the ground. And then the TLA stepped in and funded the safety gear. **Total spend: \$6,300**



Photo: Courtesy of Leemar Excavator Components

Above: Last year we awarded five TLA Trades Scholarships. These scholarships are for people training in the trades who work for a TLA member company and plan to spend their career in BC's coastal forest industry.  
**Annual Spend: \$5,000**